

*Perfect Valves For The World!*

为世界 造好阀

**ESG**<sup>®</sup>

青岛精锐机械制造有限公司  
Qingdao Elite Machinery Manufacture Co., Ltd.

地址 Add: 青岛市即墨区海尔路155号 No. 155, Haier Rd., Jimo, Qingdao, China

电话 Tel: 400-697-6268

网址 Web: [www.esgvalve.cn](http://www.esgvalve.cn) [www.esgvalve.com](http://www.esgvalve.com)

邮箱 Email: [info@esgvalve.com](mailto:info@esgvalve.com)



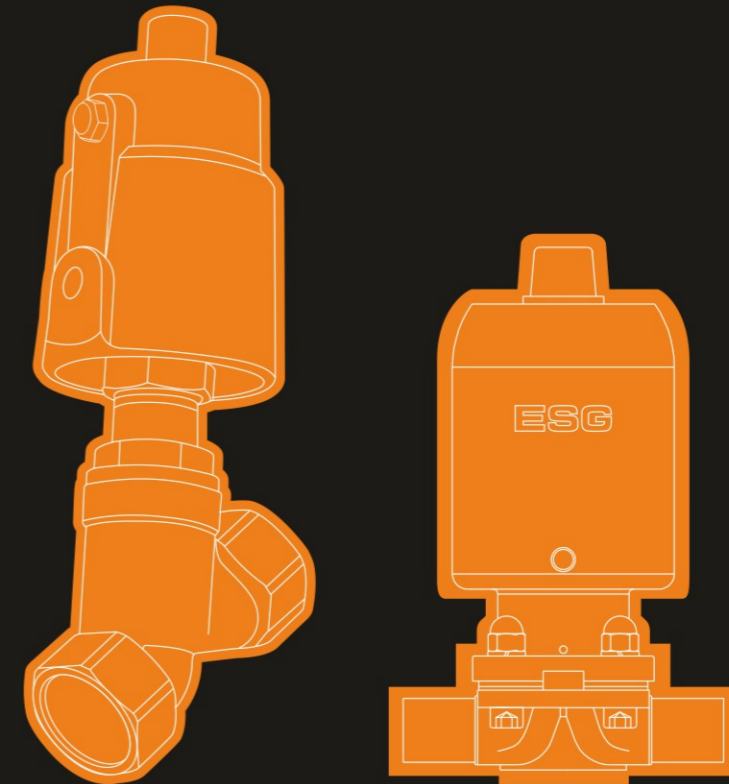
ESG 企业官网  
ESG Corporate Website



ESG 微信公众号  
ESG Official Wechat

2024 版宣传册

**ESG**<sup>®</sup>



青岛精锐机械制造有限公司

QINGDAO ELITE MACHINERY MANUFACTURE CO.,LTD.



流体过程控制系统  
解决方案领跑者

Leading the way in systematized  
solutions for fluid process control



设计  
Design



铸件  
Casting



机械加工  
Machining



阀门  
Valve

世界百年未有之大变局正加速演进，制造业的高质量发展成为大国经济的“压舱石”，也赋予我们应对外部风险挑战的信心和底气。深耕阀门制造业二十余载的青岛精锐机械制造有限公司（后简称“ESG”）传承大国工匠精神，坚守匠心、精雕细琢，用良知之心，铸良知产品，做良知企业，收获了众多合作伙伴沉甸甸的信任和口碑。

在脚踏实地的同时，ESG紧密与时代同频，立志做流体过程控制系统解决方案领跑者，不断加大研发投入，推进以国代进；着力发展智能制造，推动产业升级；严控节能减排，助力绿色发展。以实际行动引领阀门行业智能化、低碳化、个性化新风向，践行为世界造好阀的庄严承诺！

The world is undergoing major changes unprecedented in a century. The high quality development of the manufacturing industry has become the "ballast stone" of the economy of a major country, which also gives us confidence to cope with external risk and challenges. Qingdao Elite Machinery Manufacturing Co., Ltd. (hereinafter referred to as "ESG"), who has been deeply cultivating valve manufacture for more than 20 years, inheriting the spirit of great craftsmen, adhering to ingenuity and meticulous crafting, casting conscience products with a conscience heart, building a conscience enterprise, has gained the trust of many partners.

Being down-to-earth, ESG keeps pace with the times closely and aspires to be a leader in providing fluid process control system solutions. We will continue to invest in R&D and promote the replacement of imported brands with domestic brands, focus on the development of intelligent manufacture, promote the industrial upgrading, strictly comply with the requirements of energy conservation and emission reduction. We will lead the valve industry to an intelligent, low-carbon and personalized future with practical actions, fulfilling the solemn promise of "making a good valve for the world".



# 打造行业顶级标杆，铸就百年幸福企业

Be the industry benchmark and create a century-old enterprise

为世界 造好阀



青岛精锐机械制造有限公司（后简称“ESG”）是集阀门的研发、生产、销售于一体的高新技术企业、专精特新“小巨人”企业、山东省瞪羚企业。公司密切关注客户需求，致力于成为流体过程控制系统解决方案领跑者。

自2001年成立以来，ESG已获得百余项专利，其中发明专利10项。公司着力打造HCPS智能制造工厂，主要产品涵盖工业级阀门、卫生级阀门及相关控制部件。角座阀、梭阀、隔膜阀、蝶阀、球阀、疏水阀、膜塞阀等多种主流阀门系列产品广受客户好评。阀门产品远销82个国家，服务范围覆盖核工业、新能源、医药、食品饮料、橡胶轮胎等19个重点行业，9家世界五百强企业。

Qingdao Elite Machinery Manufacture Co.,Ltd. (hereinafter referred to as "ESG") is a high-tech enterprise integrating R&D, production and sales of valves. The company pays close attention to customer needs and is committed to becoming a leader in fluid process control system solutions.

Since its establishment in 2001, ESG has obtained more than 100 patents, including 10 invention patents. The company focuses on building an HCPS intelligent manufacturing factory to improve production efficiency. The main products cover industrial-grade valves, sanitary valves and related control components. More than 30 mainstream valve series products such as angle seat valves, shuttle valves, diaphragm valves, butterfly valves and ball valves are widely accepted by customers. ESG products are exported to 82 countries, covering 19 key industries such as nuclear industry, new energy, biomedical, rubber tires, food and beverage, and we have 9 Fortune 500 companies partners.





# DEVELOPMENT HISTORY

## 发展历程

# 持续发展 不变初心

## 20余年的坚守与创新

*Continuous development and unchanged original intention  
Over 20 years of perseverance and innovation*

2001



3月5日，青岛北村租赁的厂房中，依靠几台二手设备，青岛精锐机械顺势启航。

2003



新厂房建成，公司整体第一次搬迁、入驻通济工业园，开启二十年老厂区，在自己热土上的精彩奋斗历程。

2005



ESG品牌诞生，意味精锐走上自主品牌发展之路。

2009



ESG商标在美国注册，标志着民族品牌ESG走出国门，在世界市场驰骋。



自主推出角座阀系列产品

2010



为提供高标准的不锈钢铸件，精锐成立铸造事业部，实现全产业链品质管控。

2013



ESG梭阀应用在美国GM通用汽车自动化生产线的机械手冷却系统中，产品品质得到世界的认可。

2015



在蓝海股权交易中心挂牌上市，精锐走上一个新的台阶。

2017



完成“长脑子”智能调节阀、卫生级领域隔膜阀的开发投入，并获得多项专利，开始新板块的开拓与创新。

2021



成功进入核工业，成为中核集团合格供应商，为核工业三废系统提供控制系统整体解决方案。

2024



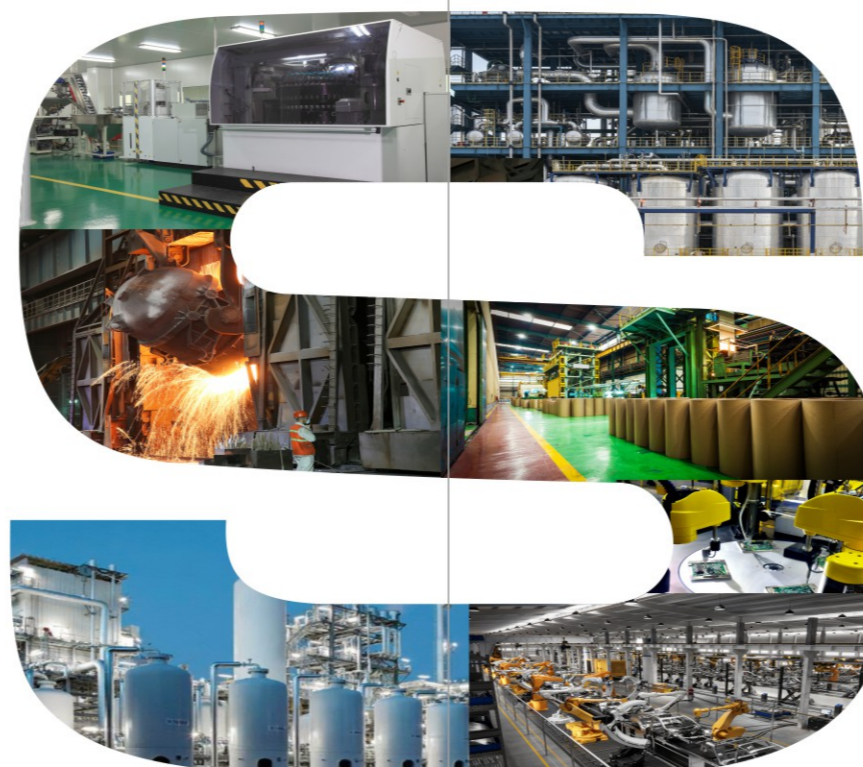
建成新生产基地，实现年产值10亿元，为制造业的提升作出积极的探索与贡献。



INTEGRATED SOLUTION  
一体化解决方案

提供系统解决方案  
为各行各业的用户创造更多价值

*Provide system solutions  
Create more value for users in various industries*



医药  
Pharmaceutical

食品饮料  
Food & Beverage

新能源  
New Energy

橡胶轮胎  
Rubber

纺织印染  
Textile Dyeing

工业气体  
Industrial Gas

铸造  
Casting

水处理  
Water Treatment

造纸  
Papermaking

光伏  
Solar Energy

化工  
Chemical

冶金  
Metallurgy

泡塑  
Eps Molding

环保  
Environmental

汽车制造  
Automobile

半导体  
Semiconductor





## 医药行业 Pharmaceutical Industry

以国代进，助力医药行业设备系统化、智能化升级

*Replacing imported products with domestic ones to help the systematic and intelligent upgrading of equipment in the pharmaceutical industry*



微小流量调节阀  
Small Flow Control Valve



气动隔膜阀  
Pneumatic Diaphragm Valve



多通道阀  
Multi-channel Valve

### 医药行业阀门痛点

#### 1. 市面产品卫生设计标准低:

医药行业对阀门的无菌性、清洁度以及安全性要求很高。市面上的阀门产品鱼龙混杂，ESG卫生级阀门通过多项国际资质认证，具有洁净度高、残留性低、高安全性、高可靠性特点。

#### 2. 交货期长:

进口产品质量好，但交货周期长。ESG卫生级阀门通过全产业链协同，采用先进工艺，打造智能制造工厂，缩短交付周期，提高服务质量。

#### 3. 进口产品价格贵:

进口隔膜阀价格昂贵，普通国产隔膜阀价格低但膜片寿命低，ESG隔膜阀膜片自主研发，使用寿命等关键指标可媲美进口品牌，价格友好，具备超高性价比。

#### 4. 难以满足多样化的定制需求:

随着医药行业的不断发展，对阀门产品的定制化需求也越来越高。ESG卫生级阀门系统化产品线齐全，为整套设备提供系统化、定制化解决方案，为客户提供一站式服务。

### 产品

- 卫生级不锈钢隔膜阀
- T型阀、罐底阀、多通道阀、取样阀等
- 角座阀
- 微小流量调节阀
- 系统化整体解决方案
- 个性化定制方案

### 优势

- 阀门全部采用不锈钢材质
- 所有材料均符合行业标准要求
- 阀门可实现气动、手动及附件控制
- 产品全流程自制，把控品质可溯源
- 单元流生产，模块化设计，快速交付
- 专业团队，可提供定制化的产品和服务

### 认证

- USP Class VI认证 USP
- FDA认证
- ATEX Directive 2014/34/EU

### The bottleneck of the industry

#### 1. Low hygiene design standards for market products:

The pharmaceutical industry has high requirements for sterility, cleanliness and safety of valves. The valve products in the market are mixed, and ESG sanitary valves have passed a number of international qualification certifications, with high cleanliness, low residue, high safety and high reliability.

#### 2. Long delivery time:

The quality of imported products is good, but the delivery cycle is long. ESG sanitary valves through the whole industry chain collaboration, the use of advanced technology, to create intelligent manufacturing plants, shorten the delivery cycle, improve the quality of service.

#### 3. Cost ineffective:

Imported diaphragm valves are expensive, ordinary domestic diaphragm valves have low prices but low diaphragm life, ESG diaphragm valves independently developed, service life and other key indicators comparable to imported brands, price friendly, with ultra-high cost performance.

#### 4. It is difficult to meet the diversified customization needs:

With the continuous development of the pharmaceutical industry, the demand for the customization of valve products is becoming higher and higher. ESG sanitary valves has a complete product line, providing systematic and customized solutions for the whole set of equipment, and providing one-stop service for customers.

### Products

- Sanitary stainless steel diaphragm valve
- T-Shape valve, Tank bottom valve, Multi-channel valve, Sampling valve, etc.
- Angle seat valve
- Micro flow control valve
- Systematic overall solution
- Personalized customized solutions

### Advantages

- All valves are made of stainless steel
- All materials are in line with industry standards
- The valve can be controlled by pneumatic, manual and accessories
- The whole process of the product is self-produced, and the quality can be traced
- Unit flow production, modular design, fast delivery
- Professional team, can provide customized products and services

### Certification

- USP Class VI certification
- FDA certification
- ATEX Directive 2014/34/EU





## 食品饮料行业 Food And Beverage Industry

提供食品饮料行业标准化、平台化解决方案，降本增效

Provide standardized and platform-based solutions for food and beverage industry to reduce costs and increase efficiency



三通角座阀  
Pneumatic Three-way  
Angle Seat Valve



比例调节角座阀  
Proportional Control  
Angle Seat Valve



灌装阀  
Filling Valve



酱料阀  
Sauce Filling Valve

### 食品饮料行业阀门痛点

#### 1. 控制精度差:

食品饮料行业需要在高速生产中实现高精度控制。ESG阀门精准控制介质走向和流量大小，提升设备效率，比例调节阀控制精度 $\leq 0.3\%$ ，重复性精度 $\leq 0.6\%$ 。

#### 2. 市面产品卫生设计标准低:

食品饮料行业对生产设备卫生标准要求高，需定期清洗消毒。ESG阀门采用食品级密封材料，通过欧盟EC1935-2004、美国FDA和USP认证，易于清洁、降低残留，有效减少食品污染的风险。

#### 3. 难以满足复杂工况，寿命低:

生产过程中环境复杂，需要阀门具有耐腐蚀和耐久性。ESG阀门有效解决各类介质困扰，实现防拉丝、防滴漏、防起泡沫、计量精准，实验室实测寿命超200万次。

#### 4. 难以满足多样化的定制需求:

食品饮料行业在灌装介质和容量需求方面多种多样。ESG三通角座阀+灌装阀组合，助力客户设备实现标准化配置。执行机构保持不变，任意更换灌装管的直径和长度，满足不同容量灌装的需求。

### 产品

- 卫生级不锈钢隔膜阀
- 角座阀、灌装阀、三通阀、比例调节角座阀、角式隔膜阀
- 系统化整体解决方案
- 个性化定制方案

### 优势

- 阀门全部采用不锈钢材质
- 易于清洗，便于维护
- 产品全流程自制，把控品质可溯源
- 单元流生产，模块化设计，快速交付
- 专业团队，可提供定制化的产品和服务

### 认证

- FDA认证 FDA
- EC 1935-2004
- ATEX Directive 2014/34/EU
- USP Class VI 认证

### The bottleneck of the industry

#### 1. Poor control accuracy:

The food and beverage industry requires high-precision control in high-speed production. ESG valves accurately control the medium direction and flow size, improve equipment efficiency, proportional control valve control accuracy  $\leq 0.3\%$ , repeatability accuracy  $\leq 0.6\%$ .

#### 2. Low hygienic design standards for market products:

The food and beverage industry has high requirements on the hygiene standards of production equipment, which needs to be cleaned and disinfected regularly. ESG valves are made of food grade sealing materials, approved by EU EC1935-2004, US FDA and USP, easy to clean, reduce residue, and effectively reduce the risk of food contamination.

#### 3. Difficult to meet complex working conditions, low life span:

The complex environment in the production process requires the valve to have corrosion resistance and durability. ESG valves effectively solve all kinds of media problems, to achieve anti-wire drawing, anti-drip, anti-foam, accurate measurement, laboratory measured life of more than 2 million times.

#### 4. It is difficult to meet diverse customization needs:

The food and beverage industry is diverse in terms of filling media and capacity needs. ESG three-way Angle seat valve + filling valve combination to help customers achieve standardized equipment configuration. The actuator remains unchanged, and the diameter and length of the filling tube can be changed arbitrarily to meet the needs of different capacity filling.

### Products

- Sanitary grade stainless steel diaphragm valve
- Diaphragm valve, Angle seat valve, Filling valve
- Systematic overall solution
- Personalized customized solution

### Advantages

- Food hygiene grade material
- Easy to clean and maintain
- The whole process of the product is self-produced, and the quality can be traced
- Unit flow production, modular design, fast delivery
- Professional team, can provide customized products and services

### Certification

- FDA certification
- EC 1935-2004
- ATEX Directive 2014/34/EU
- USP Class VI certification





## 新能源行业 New Energy Industry

填补新能源行业空白，打造标杆，赋能行业高质量发展

*Fill the gaps in the new energy industry, create benchmarks, and empower the high-quality development of the industry*



膜塞阀  
Pneumatic diaphragm valve



注液针阀  
Drip Proof Needle Valve



真空比例阀  
Vacuum Proportional Valve

### 新能源行业阀门痛点

#### 1. 进口品牌产品使用寿命短:

在新能源锂电池制造过程中，电解液残留结晶易造成阀门堵塞，缩短阀门使用寿命。ESG膜塞阀是专门为电解液灌装设备自主研发的系列产品，耐真空、耐电解液腐蚀、密封性好、无残留、在线检修。

#### 2. 产品控制精度低、稳定性差:

锂电池灌装对阀门的精度要求极高，需确保电解液的精确计量和稳定输送。ESG开发的真空比例阀集成度高，通过简单控制实现精确调节，节省 70% 空间、节约 2/3 能耗、便于维护，综合成本大幅降低。同时，ESG不断探索，聚焦客户需求，新开发出高精度注液针阀，轴液阀等系列产品。

#### 3. 进口品牌垄断市场、价格高、服务滞后:

当前电解液灌装领域阀门产品基本被国外厂商垄断，售后服务滞后。ESG膜塞阀寿命是进口阀门的 3-5 倍，为客户降本 400% 以上！ESG高集成真空比例阀解决了进口阀门存在的成本高、周期长、特殊算法调制、维护不便、售后服务滞后等问题。

### 产品

- 膜塞阀
- 真空注液阀
- 真空比例阀
- 回吸阀
- 注液针阀
- 高精度注液针阀
- 轴液阀
- 角式隔膜阀
- 拐角阀
- 提供独立的解决方案

### 优势

- 长寿命、不因结晶体而堵塞
- 产品全流程自制，把控品质可溯源
- 单元流生产，模块化设计，快速交付
- 专业团队，可提供定制化的产品和服务

### The Bottleneck Of The New Energy Industry

#### 1. Short service life of imported brand products:

In the manufacturing process of new energy lithium batteries, residual crystallization of electrolyte is easy to cause valve blockage and shorten the service life of valve. ESG CAV is a series of products specially developed for electrolyte filling equipment, vacuum resistance, electrolyte corrosion resistance, good sealing, no residue, online maintenance.

#### 2. Low product control precision and poor stability:

Lithium battery filling has extremely high precision requirements for the valve, which needs to ensure the accurate measurement and stable transmission of the electrolyte. The vacuum proportional valve developed by ESG has a high integration degree, which can be accurately adjusted through simple control, saving 70% space, saving 2/3 energy consumption, easy maintenance, and greatly reducing the comprehensive cost. At the same time, ESG continues to explore, focus on customer needs, and newly developed high-precision needle filling valve, coaxial filling valve and other products.

#### 3. Import brand monopoly market, high price, lagging service:

Currently, valve products in the field of electrolyte filling are basically monopolized by foreign manufacturers, and after-sales service is lagging. The service life of ESG CAV is 3-5 times that of imported valves, reducing the cost for customers by more than 400%! ESG highly integrated vacuum proportional valve solves the high cost of imported valves, long cycle, special algorithm modulation, inconvenient maintenance and lagging after-sales service.

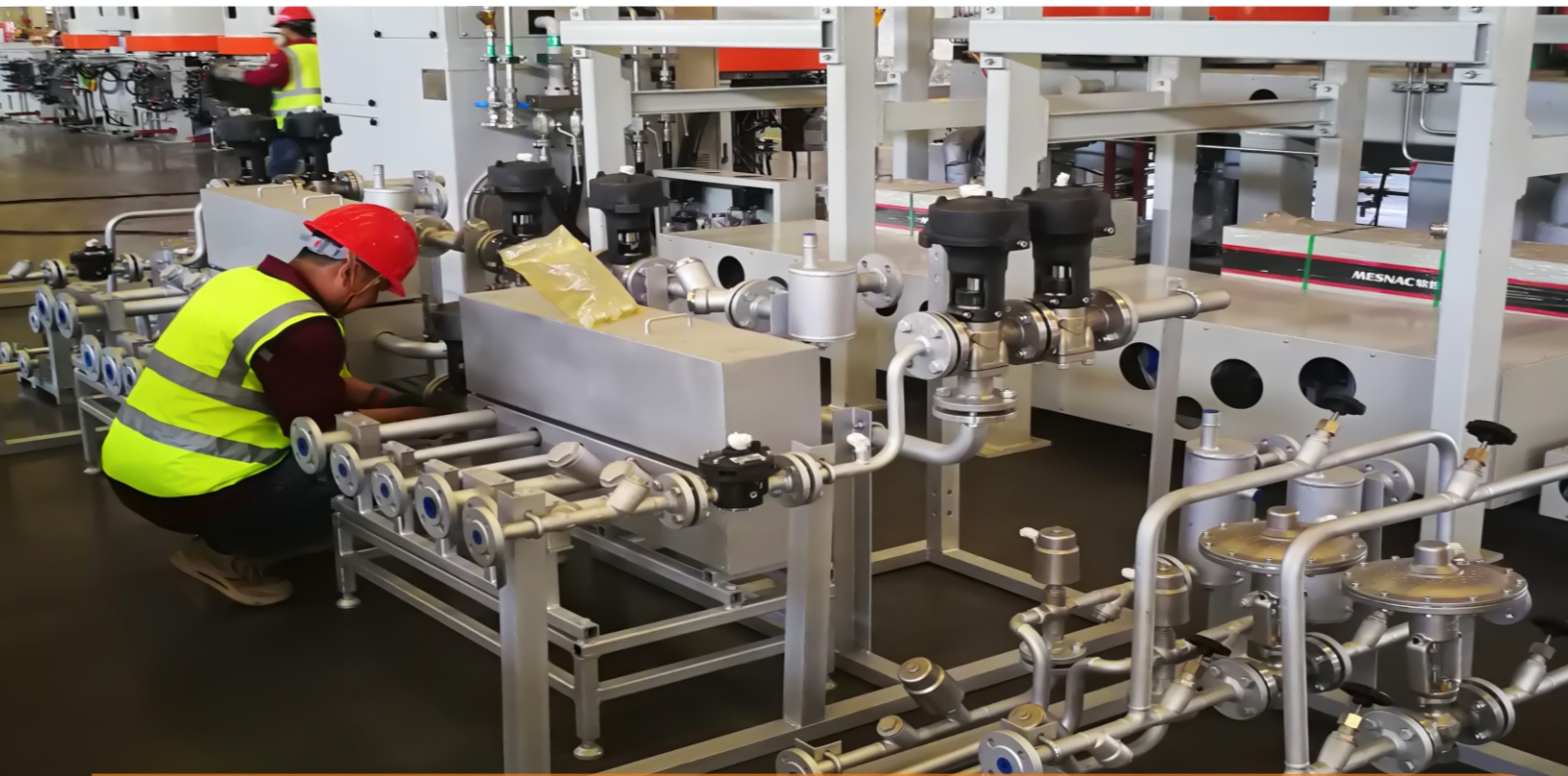
### Products

- CAV
- Vacuum Filling Valve
- Vacuum Proportional Valve
- Valve with Suction Function
- Needle Filling Valve
- High Precision Needle Filling Valve
- Coaxial Filling Valve
- Angle Diaphragm Valve
- L-Shaped Valve
- Providing Best Solution

### Advantages

- Long life, not blocked by crystals
- The whole process of the product is self-produced, and the quality can be traced
- Unit flow production, modular design, fast delivery
- Professional team, can provide customized products and services





## 橡塑行业 Rubber And Plastics Industry

突破橡胶轮胎行业一体化解决方案天花板  
环保节能减排，助力实现碳中和

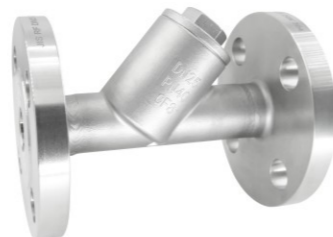
*Break through the ceiling of integrated solutions for the rubber tire industry  
Environmental protection, energy saving and emission reduction, helping to achieve carbon neutrality.*



切断阀  
Shut Off Valve



薄膜调节阀  
Regulating Valve



止回阀  
Check Valve

### 橡塑行业阀门痛点

#### 1. 难以满足复杂工况，寿命低：

橡塑行业热工硫化工艺较复杂，工况严苛，对阀门要求高，需要耐高温、高压和真空，市面阀门无法满足工况需求。ESG热工硫化系统配套阀门产品采用高端密封材料，经全新工艺精密制造，各方面性能稳定可靠、耐压强度大，使用寿命长，对橡塑行业适配性高。

#### 2. 阀组集成保温效果差：

硫化机热工阀组是轮胎硫化机的核心部件，传统的热工阀组具有焊点多，泄漏点多，阀组占地面积大，保温效果不好，运输不便等痛点。ESG致力于为客户提供一体化解决方案，在现有硫化热工原理基础上，进行整体集成化，体积紧凑，减少30%以上；泄漏点更少，保温效果更好，热量损失可减少20%-30%以上，密封更可靠。

### 产品

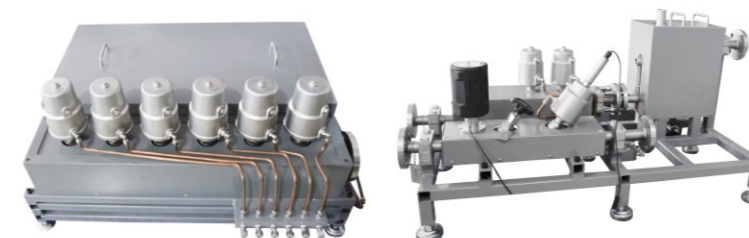
- 热工硫化系统配套阀
  - 切断阀
  - 薄膜调节阀
  - 止回阀
  - 过滤排污阀
  - 过滤器
- 橡塑行业集成阀组

### 优势

- 热工硫化系统配套阀可实现同类产品替代进口，降低采购成本；耐压强度大，装配精度高，使用寿命长，方便安装和维修；采用优质材料和特殊几何形状设计，密封可靠、流量平稳；阀杆表面特殊处理，减小与填料的摩擦力。
- 橡塑行业集成阀组集成度高，节约空间；铸造工艺先进，成本低；流量大，缩短非硫化时间，提高硫化效率；插装式设计，通道清晰明了，便于安装、检修和维护；阀门开启力小，节能降本，反应速度快。

### 产品专利

集成阀组已申请该领域发明专利2项，授权实用新型专利3项



橡塑行业集成阀组  
Integrated Valve Bank

### The Bottleneck Of The Rubber And Plastic Energy Industry

#### 1. Difficult to meet complex working conditions, low life:

Rubber and plastic industry thermal vulcanization process is more complex, harsh working conditions, high requirements for valves, high temperature resistance, high pressure and vacuum, market valves can not meet the needs of working conditions. ESG thermal vulcanization system supporting valve products using high-end sealing materials, precision manufacturing by a new process, stable and reliable performance in all aspects, high compressive strength, long service life, high adaptability to the rubber and plastic industry.

#### 2. Valve group integration insulation effect is poor:

Vulcanization machine thermal valve group is the core parts of tire vulcanization machine, traditional thermal valve group has more solder joints, more leakage points, valve group covers a large area, insulation effect is not good, transportation inconvenience and other pain points. ESG is committed to providing customers with integrated solutions, based on the existing thermal principles of vulcanization, overall integration, compact volume, reduction of more than 30%; The leakage point is less, the thermal insulation effect is better, the heat loss can be reduced by more than 20%-30%, and the sealing is more reliable.

### Products

- Valves for thermal vulcanization systems
  - Shut off valve
  - Regulating valve
  - Check valve
  - Filter Discharge Valve
  - Strainer
- Pneumatic manifold valve

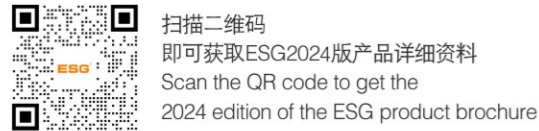
### Advantages

- The ESG valves for thermal vulcanization systems can replace imported products with similar products, so as to reduce procurement costs; High compressive strength, high assembly accuracy, long service life, easy installation and maintenance; High quality materials and special geometry design, reliable sealing, smooth flow; The stem surface is specially treated to reduce friction with fillers.
- The integrated valve bank in the rubber and plastics industry is highly integrated, saving space; Advanced casting technology, low cost; Large circulation can shorten non-vulcanization time and improve vulcanization efficiency; Plug-in design, clear channel, easy to install, repair and maintenance; The valve opening force is small, energy saving and cost saving, and the reaction speed is fast.

### Product

The integrated valve gbank has applied for 2 invention patents in this field and 3 authorized utility model patents





## Y型角座阀 Y-type Angle Seat Valve

- 100系列气控角座阀  
100 Series Pneumatic Angle Seat Valve
- 101系列气控角座阀  
101 Series Economy Type Angle Seat Valve
- 107系列手动角座阀  
107 Series Manual Angle Seat Valve
- 120系列气控角座阀  
120 Series Pneumatic Angle Seat Valve
- 121系列角式隔膜阀  
121 Series Angle Diaphragm Valve
- 122系列气控拐角阀  
122 Series Pneumatic Angle Stop Valve
- 127系列手动角座阀  
127 Series Manual Angle Seat Valve
- 角座阀配件  
Angle Seat Valve Accessories



## 比例调节角座阀 Proportional Control Angle Seat Valve

- 104系列分体式气控比例调节角座阀  
104 Series Two-piece Pneumatic Proportional Control Angle Seat Valve
- 105系列气控比例调节角座阀  
105 Series Pneumatic Proportional Control Angle Seat Valve
- 106系列电控比例调节角座阀  
106 Series Electrical Proportional Control Angle Seat Valve
- 124系列分体式气控比例调节角座阀  
124 Series Two-piece Pneumatic Proportional Control Angle Seat Valve
- 125系列气控比例调节角座阀  
125 Series Pneumatic Proportional Control Angle Seat Valve
- 135系列微小流量调节阀  
135 Series Micro Flow Control Valve



## 多通道阀 Multi-channel Valve

- 103系列三通气控角座阀  
103 Series Pneumatic Three-way Angle Seat Valve
- 103系列低流阻三通气控角座阀  
103 Series Low Flow Resistance Pneumatic Three-way Angle Seat Valve
- 109系列十字型气控连体阀  
109 Series Pneumatic Modular Valve
- 110系列气控连体阀  
110 Series Pneumatic Manifold Valve



## 灌装阀 Filling Valve

- 1AA系列无管式灌装阀  
1AA Series Pipe-less Filling Valve
- 1AB系列无管式灌装阀  
1AB Series Pipe-less Filling Valve
- 1AC/1AF系列内密封灌装阀  
1AC/1AF Series Filling Valve with Internal Sealing
- 1AL/1AM系列内密封灌装阀  
1AL/1AM Series Filling Valve with Internal Sealing
- 1AP系列内密封带回吸灌装阀  
1AP Series Filling Valve with Internal Sealing and Suction
- 1AD系列外密封灌装阀  
1AD Series Filling Valve with External Sealing
- 1AJ/1AE/1AK系列外密封带回吸灌装阀  
1AJ/1AE/1AK Series Filling Valve with External Sealing and Suction
- 1AG/1AI/1AH系列外密封带回吸灌装阀  
1AG/1AI/1AH Series Filling Valve with External Sealing and Suction
- 1A1系列内密封酱料灌装阀  
1A1 Series Sauce Filling Valve with Internal Sealing
- 1A2系列内密封灌装阀  
1A2 Series Filling Valve with Internal Sealing



## 梭阀 Shuttle Valve

- 200系列气控梭阀  
200 Series Pneumatic Shuttle Valve
- 204系列法兰式气控梭阀  
204 Series Flanged Shuttle Valve
- 204系列大口径气控梭阀  
204 Series Large-diameter Shuttle Valve
- 204系列法兰式三通气控梭阀  
204 Series Flanged Three-way Shuttle Valve
- 205系列高压气控梭阀  
205 Series Pneumatic High-pressure Shuttle Valve



## 球阀 Ball Valve

- 412系列一片式高平台法兰球阀  
412 Series 1-PC Flanged Ball Valve with Mounting Pad
- 421系列二片式内螺纹球阀(F/F)  
421 Series 2-PC Ball Valve (F/F)
- 422系列二片式内外螺纹球阀(F/M)  
422 Series 2-PC Ball Valve (F/M)
- 431系列三片式内螺纹球阀  
431 Series 3-PC Threaded Ball Valve
- 432系列三片式对焊球阀  
432 Series 3-PC Butt Weld Ball Valve
- 433系列三片式法兰球阀  
433 Series 3-PC Flanged Ball Valve
- 434系列三片式加长对焊球阀  
434 Series 3-PC Extended Butt Weld Ball Valve
- 441系列三片式高平台对焊球阀  
441 Series 3-PC Butt Weld Ball Valve with Mounting Pad
- 442系列三片式高平台加长对焊球阀  
442 Series 3-PC Extended Butt Weld Ball Valve with Mounting Pad
- 443系列三片式高平台螺纹球阀  
443 Series 3-PC Threaded Ball Valve with Mounting Pad
- 445系列内螺纹三通低平台球阀  
445 Series 3-Way Ball Valve with Mounting Pad
- 451系列气控球阀A型  
451 Series Pneumatic Ball Valve Type A
- 451系列气控球阀D型  
451 Series Pneumatic Ball Valve Type D





扫描二维码  
即可获取ESG2024版产品详细资料  
Scan the QR code to get the  
2024 edition of the ESG product brochure

## 止回阀 Check Valve

- 502系列旋启式止回阀  
502 Series Swing Check Valve
- 503系列二片式弹簧立式止回阀  
503 Series 2-PC Spring Vertical Check Valve
- 508系列对夹升降式止回阀  
508 Series Wafer Type Disc Check Valve
- 509系列Y型弹簧止回阀  
509 Series Y-Spring Check Valve



## 过滤器 Strainer

- 601系列单帽过滤器  
601 Series Single Cap Strainer
- 602系列双帽过滤器  
602 Series Double Cap Strainer
- 603系列法兰过滤器  
603 Series Flanged Strainer
- 605系列过滤排污阀  
605 Series Filter Discharge Valve



## 蝶阀 Butterfly Valve

- 300系列气控蝶阀  
300 Series Pneumatic Butterfly Valve
- 303系列斜板蝶阀  
303 Series Inclined Plate Butterfly Valve



## 隔膜阀 Diaphragm Valve

- A00系列气控隔膜阀  
A00 Series Pneumatic Diaphragm Valve
- A01系列手动隔膜阀  
A01 Series Manual Diaphragm Valve
- A02系列比例调节隔膜阀  
A02 Series Proportional Diaphragm Valve
- A4系列i-bodies  
A4 Series I-bodies
- A6系列多通道阀  
A6 Series M-bodies
- A50系列组合隔膜阀  
A50 Series Combination Diaphragm Valve
- A52系列组合罐底阀  
A52 Series Combination Bottom Tank Valve



## T型阀、罐底阀、取样阀 T-shape Valve/Tank Bottom Valve/Sampling Valve

- A10系列气控T型阀  
A10 Series Pneumatic T-shape Valve
- A11系列手动T型阀  
A11 Series Manual T-shape Valve
- A20系列气控罐底阀  
A20 Series Pneumatic Tank Bottom Valve
- A21系列手动罐底阀  
A21 Series Manual Tank Bottom Valve
- A31系列手动取样阀  
A31 Series Manual Sampling Valve



## 卫生级蝶阀、球阀、止回阀 Sanitary Butterfly Valve/Ball Valve/Check Valve

- B00系列立式气控蝶阀  
B00 Series Vertical Pneumatic Butterfly Valve
- B10系列拉杆式手动蝶阀  
B10 Series Pull Handles Manual Butterfly Valve
- B11系列鸭嘴式手动蝶阀  
B11 Series Multi-handles Manual Butterfly Valve
- C00系列卧式气控3PC球阀  
C00 Series 3-PC Horizontal Pneumatic Ball Valve
- C01系列立式气控蝶形球阀  
C01 Series Vertical Pneumatic Butterfly Ball Valve
- C10系列手动三片式平台球阀  
C10 Series 3-PC Ball Valve with Mounting Pad
- C11系列手动蝶形球阀  
C11 Series Manual Butterfly Ball Valve
- D00系列卡箍式止回阀  
D00 Series Clamp Type Check Valve





扫描二维码  
即可获取ESG2024版产品详细资料  
Scan the QR code to get the  
2024 edition of the ESG product brochure

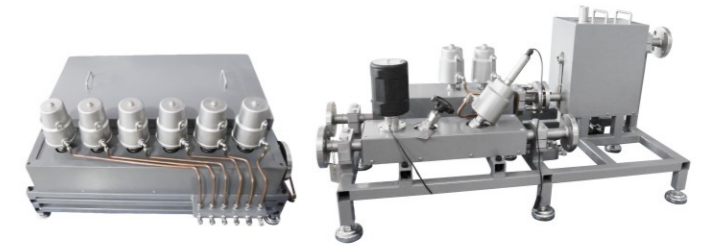
## 疏水阀 Steam Trap

- 800系列热动力型蒸汽疏水阀  
800 Series Thermodynamic Steam Trap
- 801系列热动力型蒸汽疏水阀  
801 Series Thermodynamic Steam Trap
- 802系列杠杆浮球式蒸汽疏水阀  
802 Series Thermodynamic Steam Trap
- 803系列热静力蒸汽疏水阀  
803 Series Thermostatic Steam Trap
- 804系列热静力蒸汽疏水阀  
804 Series Thermostatic Steam Trap
- 805系列热静力蒸汽疏水阀  
805 Series Thermostatic Steam Trap
- 806系列热静力蒸汽疏水阀  
806 Series Thermostatic Steam Trap



## 集成阀组 Integrated Valve Bank

- 空气弹簧硫化机集成阀组  
Integrated Valve Bank For Air Spring Curing Press



## 注液类阀门、真空比例阀 Vacuum Filling Valve, Vacuum Proportional Valve

- CAV系列膜塞阀  
ACV Series Pneumatic Diaphragm Valve
- CNV系列注液针阀  
CNV Series Drip Proof Needle Valve
- CPV系列高精度注液针阀  
CPV Series High Precision Needle Valve
- CAC系列真空注液阀  
CAC Series Vacuum Proportional Valve
- CLK系列联动阀  
CLK Series On-off Valve
- CAS系列回吸阀  
CAS Series Valve With Suction Function
- VPA系列真空比例阀  
VPA Series Vacuum Proportional Valve



## 其它阀门 Other Valves

- 700系列减压阀  
700 Series Pressure Reducing Valve
- 901系列 杠杆浮球式排气阀  
901 Series Float Type Air Eliminator
- 902系列 防真空阀  
902 Series Vacuum Breaker
- 908系列螺纹式排水阀  
908 Series Threaded Drain Valve
- 908系列法兰式排水阀  
908 Series Flanged Drain Valve
- 909系列排气阀/放空阀  
909 Series Exhaust Valve



## 切断阀、薄膜调节阀 Shut Off Valve, Regulating Valve

- Z11系列两通切断阀  
Z11 Series Pneumatic Shut Off Valve
- Z11系列三通切断阀  
Z11 Series Pneumatic Shut Off Valve
- Z13系列薄膜调节阀  
Z13 Series Pneumatic Regulating Valve



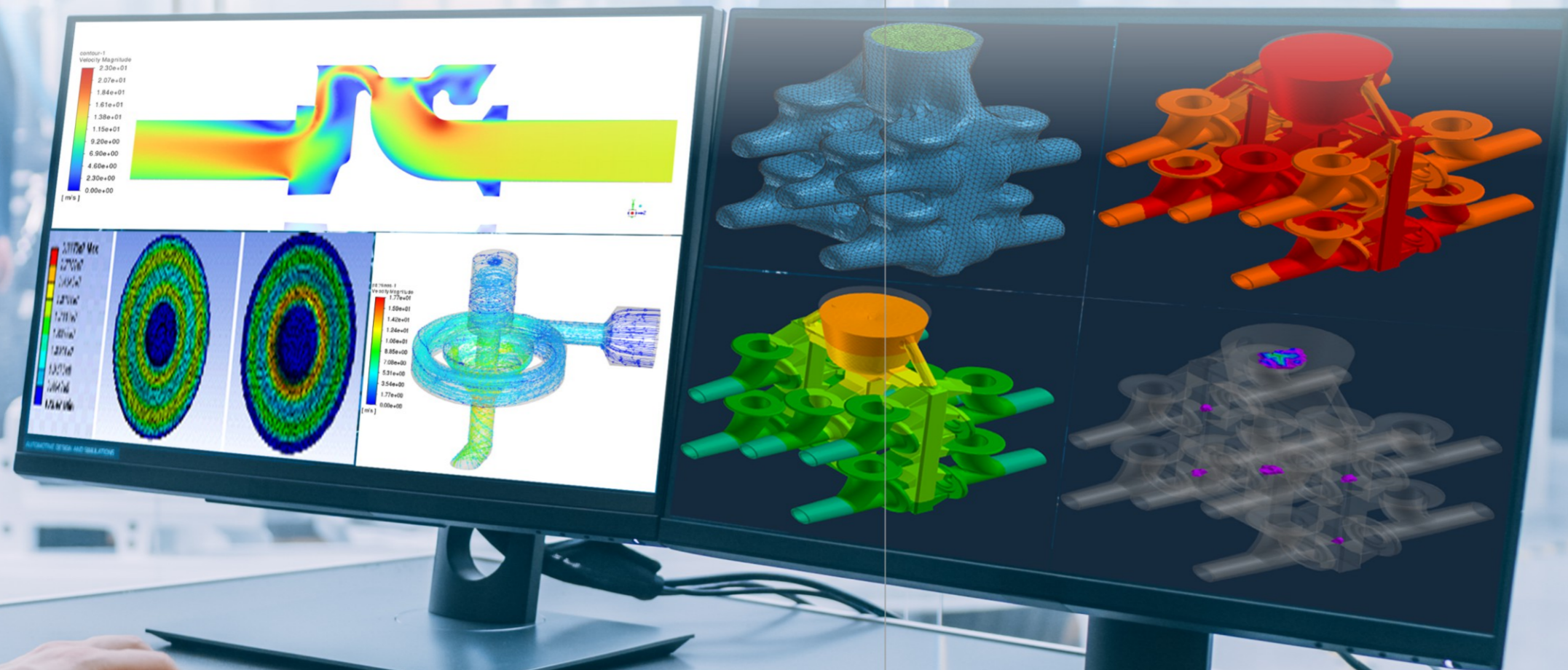
## 控制部件 Control Accessory

- OS2系列双位反馈器  
OS2 Series Position Indicator
- OP0系列智能调节定位器  
OP0 Series Intelligent Positioner
- OP1系列分体式智能调节定位器  
OP1 Series Two-piece Intelligent Positioner





## Simulation applications to achieve rapid product delivery 仿真模拟应用，实现产品快速交付



利用专业仿真在产品的设计阶段对结构、流场等进行模拟工况分析，为新产品开发提供重要的理论依据和实践支持，为更贴合客户的使用体验提供可能，同时缩短产品开发周期、降低产品验证测试成本，为市场提供更具竞争力的产品！

The use of professional simulation in the product design stage to simulate the structure, flow field and other working conditions, to provide important theoretical and practical support for new product development, to better fit the customer experience to provide the possibility, while shortening the product development cycle, reduce the cost of product verification and testing, to provide more competitive products for the market!

运用Procast专业仿真分析软件，模拟铸造过程的充型、凝固和冷却等多个阶段，分析模具、工艺对铸件在形成过程中的各种影响。通过模拟、分析预测铸件中可能出现的缩孔、裂纹、裹气、冲砂等结构缺陷，采用修模、改善工艺等措施，降低铸件缺陷的发生率，提高工艺成品率。

The professional simulation analysis software Procast is used to simulate the filling, solidification and cooling stages of the casting process, and analyze the various influences of the mold and process on the forming process of the casting. Through simulation, analysis and prediction of possible structural defects such as shrinkage hole, crack, gas wrapping and sand punching in castings, the incidence of defects in castings is reduced and the yield of process is increased by adopting measures such as mold repair and process improvement.



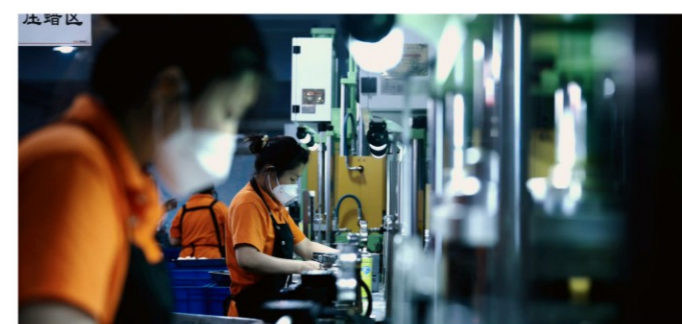


## 全流程把控质量， 提升精密铸造能力

公司对产品铸造质量进行全流程把控，涵盖蜡型、制壳、浇铸、后处理等全铸件生产工序。拥有北方第一条最大自动制壳生产线，自主设计研发铸造模具，铸造单件5g至30000g的多样精密铸件，包括以CF8, CF8M, CF3M为主的高品质不锈钢，以及中低合金钢、碳钢等各类材料的精密铸件。铸造精度通常在CT4-CT6之间，关键工件甚至可达CT3水平。

The company controls the whole process of product casting quality, covering the whole casting production process such as wax type, shell making, casting and post-treatment. It is equipped with the first largest automatic shell production line in North China, and independently designed and developed casting molds, casting a variety of precision castings from 5g to 30000g, including high-quality stainless steel dominated by SS304 and SS316, as well as precision castings of medium and low alloy steel, carbon steel and other materials. The casting accuracy is usually between CT4-CT6, and the key workpiece can even reach the CT3 level.

Control The Quality  
Of The Whole Process  
And Improve The  
Precision Casting Ability





Dedicated to building an  
HCPS intelligent manufacturing factory  
致力于打造HCPS智能制造工厂

智能制造(HCPS)理念

*Intelligent Manufacturing (HCPS) Concept*

以工艺、装备为核心，以数据为基础，依托制造单元、车间、供应链和产业集群等载体，构建虚实融合、知识驱动、动态优化、安全高效的智能制造系统。

With technology and equipment as the core, data as the foundation, and relying on carriers such as manufacturing units, workshops, supply chains, and industrial clusters, we build an intelligent manufacturing system that integrates virtual and real, knowledge driven, dynamic optimization, and safe and efficient.

智能制造工厂建设路径

*The construction path of intelligent manufacturing factories*

点

**智能装备:** 机加机械手、立车车铣复合、钻攻中心、阀杆自动加工、装配自动压合、自动紧固、自动组

装

线

**智能产线:** 工业单元、锂电池单元、橡塑单元、核工业单元、卫生级单元

面

**智能工厂:** MES系统+多个智能产线(批量)/柔性生产线(多品种、小批量)+仓储/物流系统+质量检验检测系统+智能试验线

Point

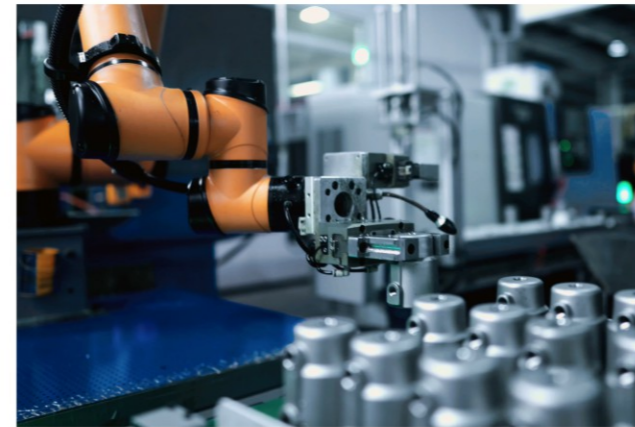
Intelligent equipment: machining manipulator, vertical turning and milling composite, drilling and tapping center, automatic processing of valve stem, automatic assembly pressing, automatic fastening, automatic assembly

Line

Intelligent production lines: industrial units, lithium battery units, rubber and plastic units, nuclear industrial units, hygiene level units

Plane

Intelligent factory: MES system+multiple intelligent production lines (batch)/flexible production lines (multi variety, small batch)+warehousing/logistics system+quality inspection and testing system+intelligent testing line



机加机械手  
Machine Manipulator



智能产线  
Intelligent Production Line



装配中心  
Assembly Center



检测中心  
Testing Center



二十年如一日坚守良知底线  
产品即人品，每只阀门出厂前会经过100%专业检测

For twenty years, steadfastly adhering to the red line of conscience  
Product is character, and each valve undergoes 100% professional testing before leaving the factory

ESG人始终牢记三不：不接收不良品、不生产不良品、不转运不良品。

ESG建立了整套完善有序的质量管理体系，绝不让一件不合格的产品出厂，ESG相信这既是对客户负责，更是对ESG自己的良知负责。

ESG people always remember the three notes: not accepting defective products, not producing defective products and not transporting defective products.

ESG has established a complete and orderly quality management system, never allowing any unqualified products to leave the factory. ESG believes that this is not only responsible to customers, but also to ESG's own conscience.



- 疲劳实验室
- 性能实验室
- 工况实验室
- 流量实验室
- 材料实验室
- 计量实验室
- 力学实验室
- Fatigue laboratory
- Performance laboratory
- Working condition laboratory
- Flow laboratory
- Materials laboratory
- Metrology laboratory
- Mechanics laboratory





# HORNOR 资质荣誉

## 体系认证

- ISO9001 质量管理体系认证
- ISO14001 环境管理体系认证
- ISO45001 职业健康安全管理体系认证
- 能源管理体系认证
- 服务认证
- 知识产权管理认证
- 两化融合管理体系认证

## System Certifications

- ISO9001 Quality management system certification
- ISO14001 Environmental management system certification
- ISO45001 Occupational Health and Safety
- Energy management system certification
- Service certification
- Intellectual Property Management Certification
- Integration of informatization and informatization management system certification

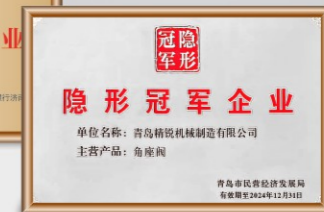
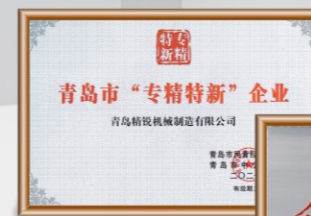


## 行业区域认证

- 卫生级领域 FDA USP
- TS特种设备生产许可证
- 欧盟压力设备CE认证
- 英国压力设备UKCA认证
- 俄罗斯CU-TR认证
- 欧盟食品安全检测EC认证
- 欧盟防爆认证ATEX
- 材料检测REACH认证、RoHS认证

## Industry And Regional Certifications

- FDA, USP
- TS special equipment production license
- CE
- UKCA
- CU-TR
- EC: EU food safety testing
- ATEX
- REACH, RoHS



- 高新技术企业
- 专精特新“小巨人”企业
- 山东省瞪羚企业
- 山东省首台套关键核心零部件
- 山东省科小能力提升项目
- 青岛市榜样企业
- 青岛市专精特新企业
- 青岛市民营领军标杆企业
- 青岛市一企一技术研发中心
- High-tech Enterprise
- Little giant
- Gazelle Enterprise in Shandong
- The First Set Of Key Core Components In Shandong
- Technology Improvement Project of Shandong Province
- Qingdao Model Enterprise
- Qingdao Specialized, Precise, Unique, New enterprise
- Qingdao Leading Benchmark Private Enterprise
- Qingdao One Enterprise, One Technology R&D Center

- 青岛市工业设计中心
- 青岛市技术创新中心
- 青岛市企业技术中心
- 青岛市工程研究中心
- “青岛制造”品牌重点企业
- 青岛市第三批创新实验室
- 青岛市隐形冠军
- 青岛名牌
- 青岛市专家工作站
- Qingdao Industrial Design Center
- Qingdao Technology Innovation Center
- Technology Center In Qingdao Enterprises
- Qingdao Engineering Research Center
- “Made In Qingdao” Key Brand Enterprise
- The Third Batch Of Innovation Laboratories In Qingdao
- Qingdao Hidden Champion
- Qingdao Famous Brand
- Qingdao Expert Workstation



目前持有 **100+** 项专利, 其中:

- 发明专利 10+ 项
- 实用新型专利项 54+ 项外
- 观专利 29+ 项
- 软件著作权 3+ 项

Currently there are 100+ patents

- Invention Patent 10+
- Utility patent 54+
- Appearance patent 29+
- Software copyright 3+





迄今, ESG共服务了  
**82+国家和地区的客户**  
 ESG has served customers in 82+ countries and regions




拥有  
**9+** 个世界五百强合作伙伴

9+ fortune 500 partners

应用于  
**19+** 个行业

applied to 19+ industries

超过  
**34+** 个ESG注册国家

more than 34+ ESG registered countries

sold to 82+ countries

262+ professional and technical workers

销往  
**82+** 个国家

拥有  
**262+** 名专业技术工人

**ESG**

青岛精锐机械制造有限公司  
 Qingdao





# OATH UNDER THE NATIONAL FLAG 国旗下誓言

用良知之心、铸良知产品，做良知企业的价值观；  
立志传承大国工匠精神，坚守匠心、精雕细琢；  
做工业流体智控专家，为中国制造代言；  
做用心精锐人，为世界造好阀！

*Adhering to the values of using conscience to create conscientious products and being a conscience enterprise;  
Determined to inherit the craftsman spirit of a great country.  
Adhere to ingenuity and meticulous craftsmanship. Be an expert in industrial fluid intelligent control and represent Made in China.  
Become a dedicated elite person and create a good valve for the world!*



## 使命 MISSION

**在追求物质与精神双丰收的同时，为制造业的整体提升做贡献**  
*Contribute to the overall improvement of the manufacturing industry while pursuing both material and spiritual harvests*

## 愿景 VISION

**打造行业顶级标杆，铸就百年幸福企业**  
*Building a Top Benchmark in the Industry and Creating a Centennial Happy Enterprise*

## 价值观 VALUE

**用良知之心，铸良知产品，做良知企业**  
*Using the Heart of Conscience to Forge Conscience Products and Build a Conscience Enterprise*



# CHARITY 慈善公益

青岛慈善总会爱基金项目荣誉会长  
青岛手牵手圆梦慈善服务中心理事长  
成立手牵手圆梦慈善服务中心，陪伴青岛 1000 名孤儿健康成长；  
成立精英和精华教育基金并持续 9 年，在上海理工大设立奖学金，累计捐款 500 万元，奖励优秀教师和学生；  
开展公益讲堂，修身 齐家 治企 利天下；  
.....

Honorary President of the Love Fund Project of Qingdao Charity Association  
Chairman of Qingdao Hand in Hand Dream Charity Service Center  
Establishing a Hand in Hand Dream Charity Service Center to accompany the healthy growth of 1000 orphans in Qingdao;  
The Elite and essence Education Fund was established and lasted for 9 years. Scholarships were set up in Shanghai University of Science and Technology, with a total donation of 5 million yuan to award outstanding teachers and students;  
Carry out public welfare lectures, cultivate oneself, govern families, enterprises, and benefit the world;  
.....



# GREEN AND LOW-CARBON 绿色低碳

ESG始终践行绿色发展理念，通过ISO14001环境体系等国际标准认证，致力于打造HCPS智能工厂，优化生产流程，提高制造工艺水平，节约资源，提升资源使用效能。加快技术攻坚，生产环保型阀门产品，延长产品使用寿命，为客户提供流体过程控制系统解决方案。加速淘汰落后产能，全方位使用环保材料，减少碳排放，走可持续绿色发展之路。

ESG has always practiced the concept of green development, passed the ISO14001 environmental system and other international standards certification, and is committed to building HCPS smart factories, optimizing the production process, improving the level of manufacturing technology, saving resources, and improving the efficiency of resource use. Speed up technical breakthroughs, produce environmentally friendly valve products, extend product life, and provide customers with fluid process control system solutions. Accelerate the elimination of backward production capacity, use environmentally friendly materials in all aspects, reduce carbon emissions, and take the road of sustainable green development.

